

WAKE STATION

*Wake the
world!*



**Wakeboarding
Cable Systems
& Features**

WakeStation is a two-tower, straight-line cable system for wakeboarding and snowboarding. It's a versatile, portable and fully customizable system for any location, and it works for everyone — from total beginners to professional riders. When you combine all that with our wide range of wake features and pylon heights, any wake park with a WakeStation system means fun for the riders and spectators and good business for the owners.

How do we know? We started WakeStation because we simply weren't happy with the options available when building our own wake park. In 2011, we set out to make the best system on the market. After installing 90+ cable systems in 18 countries, our customers assure us that we've achieved that goal. We're dedicated to always improving the WakeStation system, and our level of customer service is second to none.

Like anyone with a competitive streak, we want to keep breaking records.

We want to **Wake the World.**



FISE World 2017, France
photographer Tomas Jakovlevas

cover:
designed by Kęstutis Lašinskas

THE WakeStation -SYSTEM-



- 4 Wake Parks
- 6 Winter Parks
- 8 Technical Information
- 10 Park Schematics
- 12 Pylon Heights
- 14 Additional Details
- 16 Add-ons & Upgrades
- 20 Pentasi FSC
- 22 Wake Park Features
- 26 Customer Service
- 27 Testimonials
- 28 Pricing
- 30 Timeline
- 32 Parks and Distributors



Wake -PARKS-

Water cableways are a very attractive way to enjoy a wide range of watersport activities.

Wakeboarders, wakeskaters, wakeskiers or those just wanting to ride an inflatable tube can enjoy a WakeStation cable system. Wake parks are the perfect way for people of different age groups and abilities to spend time outdoors. Watersport activities are also spectator-friendly. Offering a small beach, café-bar and other outdoor activities will make a wake park even more popular.

So what are some of the benefits of getting a WakeStation?

- wakeboarding is the most rapidly growing watersport in the world
- minimal legal requirements for setting it up
- attractive and fun for people of all ages and abilities
- environmentally-friendly device run by quiet electric motor
- lightweight system set-up and easy mobility
- low operational costs for both electricity and labor
- flexible use for summer wake parks and winter snow parks

Whether used as part of a full-size cable park, a stand-alone device, for a demo event or in a backyard — a WakeStation is a great choice!



Wake Inn Vilnius, Lithuania

Winter -PARKS-

A cable park can run all year round! WakeStation is a fun way to entertain your customers during wintertime. Snow parks and snowtube tracks made from natural or artificial snow are ideal for families with children or pro snowboarders. Using our team's know-how, you can establish and run a successful WakeStation-based snow park for all your customers, regardless of their age and skill.

Rahinge Ekstreempark, Estonia



Technical -INFORMATION-

WakeStation workshop, Estonia

We use CNC benches and the strongest and safest materials available to maintain the highest quality. Steel parts are hot-dip galvanized. We are in compliance with all EC directives, and WakeStation systems have the **CE mark** and serial numbers. We are also accredited by **Poland's TDT** (Transportation Technical Supervision) and **Germany's TÜV** (Technical Inspection Association) has approved our cable system, which ensures the absolute highest European standards have been met.

Rated power	5.5 kW
Standard pylon height	6.75 m
Alternative pylon height	4.0 m to 19.2 m
Cableway length between pylons	30 to 300 m
Vertical pylon inclination angle	±7 °C
Operating speed	up to 40 km/h
Power supply	3F / 16A / 400V / 50Hz
Running cable diameter	ø 8 mm
Static cable diameter	ø 10 mm (2 pcs per pylon)
Allowed outside operating temperature	-15 / +45 °C
Maximum wind endurance in operating mode	15 m/s
System's maximum wind load capacity	50 m/s

**THE WAKESTATION
SYSTEMS INCORPORATE ONLY
THE BEST COMPONENTS BY
LEADING MANUFACTURERS:**

Engines
SEW-Eurodrive (Germany)



Bearings
SKF (Sweden)

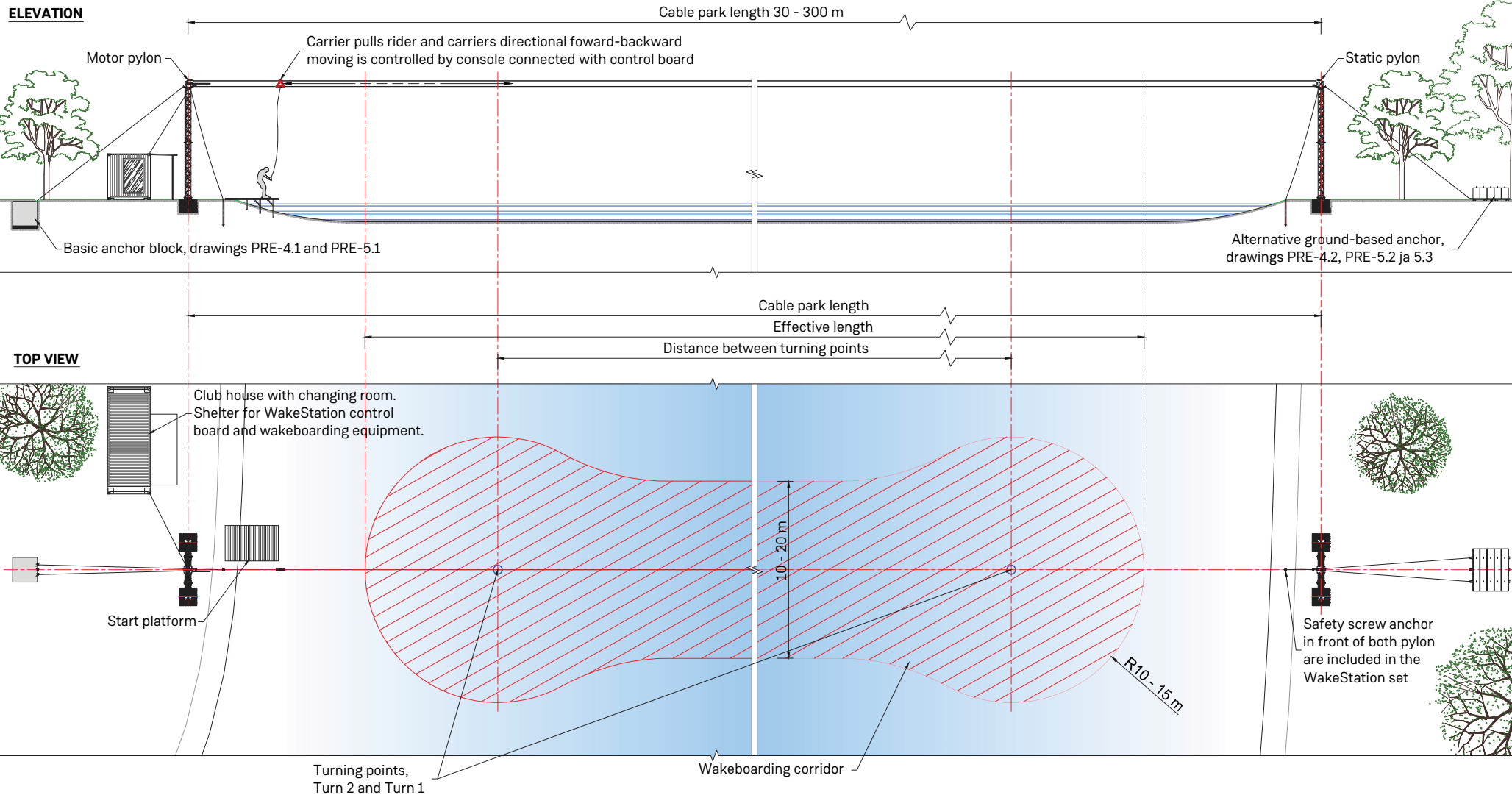


Electronic cabling
Lapp Kabel (Germany)



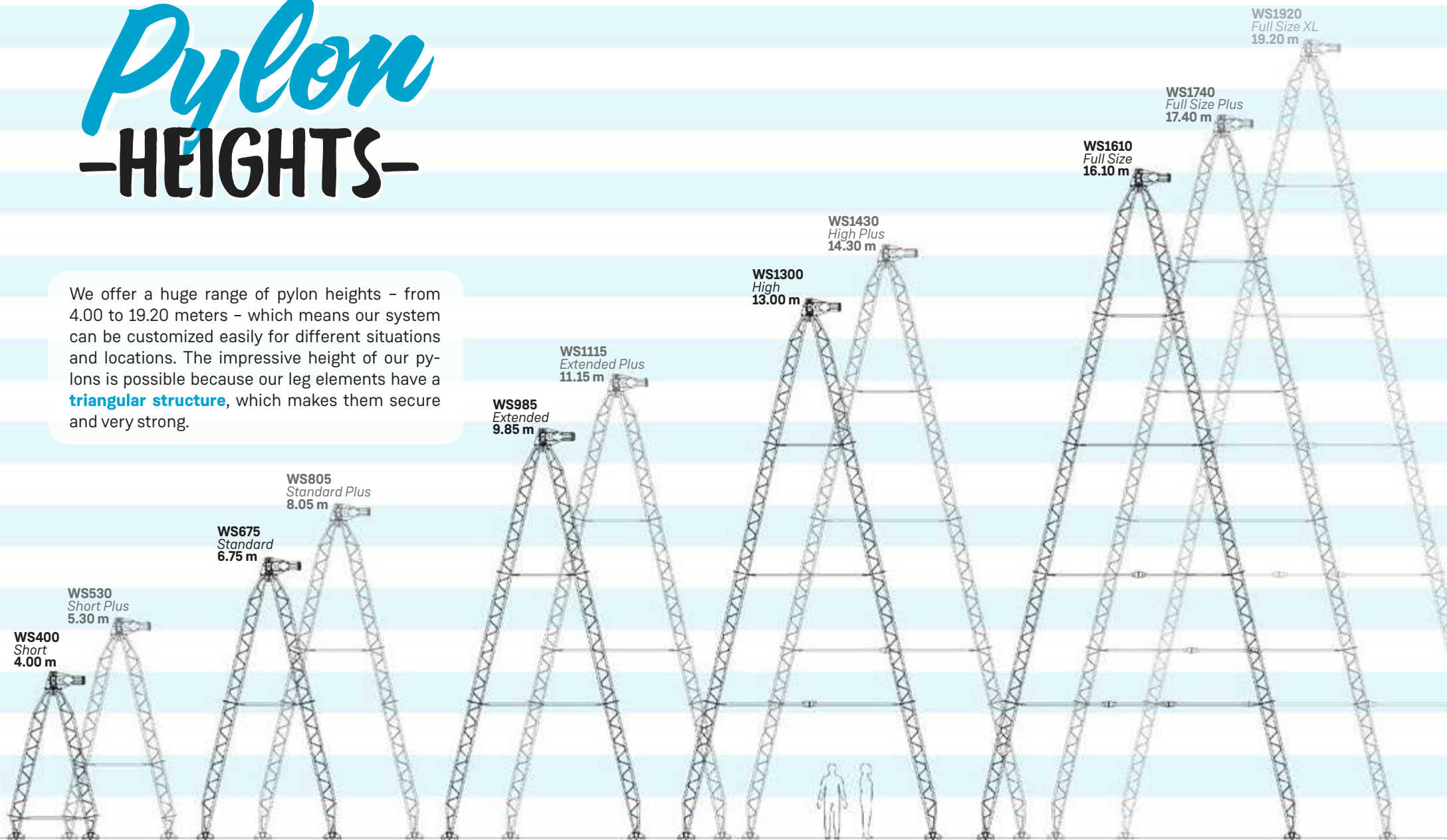
Electronics
Siemens (Germany)

Park -SCHEMATICS-



Pylon -HEIGHTS-

We offer a huge range of pylon heights - from 4.00 to 19.20 meters - which means our system can be customized easily for different situations and locations. The impressive height of our pylons is possible because our leg elements have a **triangular structure**, which makes them secure and very strong.



Otepää Wakepark, Estonia



Additional -DETAILS-

The WakeStation system is robust, but also **easy to operate** and maintain. Our system offers more than great specs and a wide range of pylon heights. It is also **portable** and easy to transport, with leg elements that are 3.3 meters long and weigh around 55 kg (121 lb). Tracks can be up to 300 meters long. The standard motor is 5.5 kW and the Pro upgrade is 7.5 kW.

The WakeStation has a user-friendly, lightweight and ergonomic remote. With the WakeStation remote, it is possible to perform automatic system calibration after setting up the system and begin operating it really quickly. We also offer a Wireless Remote add-on.

Every WakeStation system comes with web-based, user-friendly software for changing parameters (such as distances, turning points, speeds and many other parameters) and performing maintenance checks. With the software, it is possible to view a diagnostics log and make parameter back-ups. Every system includes a WiFi router for accessing the web-based software wirelessly from most internet browsers.

Leg elements



Ergonomic remote



Wireless remote



Add-ons & -UPGRADES-



Wake Village, Lithuania

The standard WakeStation system will meet the needs of most wake parks, but we do offer a few upgrades for those times when a little something extra is needed. In addition to being very practical, these upgrades may reduce a park's labor costs.

3RD CABLE AND SMART-TENSIONING SYSTEM

Longer tracks may need extra tension. This upgrade includes an advanced carrier with pylon head extensions, a third support cable, additional pulleys and a griphoist. All WakeStation systems can be upgraded with this feature.





WAKESTATION PRO PACKAGE

This upgrade provides additional power with a **7.5 kW motor** and includes enhanced automatics. With the WakeStation Pro Package, the system's operating speed is up to 50 km/h (instead of 40). The power supply must be 3F / 25A / 400V / 50Hz.

WEB REMOTE

Our web-based interface is a standard feature of every WakeStation system, while the Web Remote upgrade allows operators to operate the system with a smartphone. This add-on makes it possible to switch between four different track presets and to use the timer function. When there is more than one WakeStation cable system in a wakepark, it is possible for one person to operate these systems at the same time.



SELF-SERVICE

This upgrade allows riders to control the system themselves while on the water. Operator supervision is necessary.



Rahinge Ekstreempark, Estonia

EXTENSION SETS

1.3 m or 3.1 m extension sets are available for both towers and as an upgrade even after system installation.

1.3 m extension



3.1 m extension





Pentasi FSC

When a wake park needs to accommodate more riders, we offer the **Pentasi Full Size Cable**. Pentasi has been producing FSCs since 1993, and their decades of experience is one reason why we chose to work closely with them. Another reason is that their system is **well-priced without sacrificing any quality**. The Pentasi FSC can handle up to 10 riders at a time, depending on the length of the course. The track can be with 4, 5 or 6 columns, and riders are pulled in a circle at a speed of 15-60 km/h. The track is not loud, so there is **no disturbing sound** when it's operating. Anyone swimming and relaxing nearby will not be bothered.

Both the WakeStation and Pentasi FSC have a **positive influence on the quality of water** in smaller lakes (which usually have problems with the quantity of oxygen). So these systems are an effective way to increase the oxygen and rotation of the water. In summertime, they can be even used as substitutes for different water-rotating systems.

The Pentasi FSC provides a large-scale system preferred by advanced riders. The WakeStation system is ideal for absolute beginners who need one-on-one instruction or for pro riders who want to focus on improving a particular move. Together, we provide full-service wake parks that include a two-cable system, the FSC and great obstacles to satisfy the needs of all riders, regardless of skill level.



both photos:
Central Wakeboard Park Pécs, Hungary
photographer Sada Domonkos



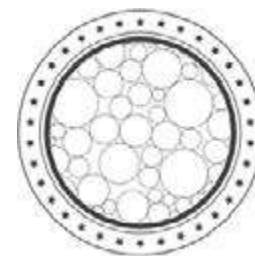
**HIGH DENSITY
POLYETHYLENE**



**UV
RESISTANT**



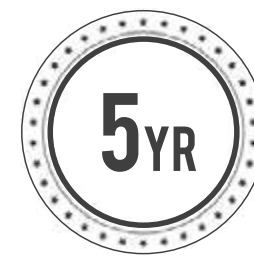
**HOT BENDED
CORNERS**



**FILLED WITH
STYROFOAM**



**ANCHORS AND
FASTENERS INCLUDED**



**FIVE-YEAR
WARRANTY**



We manufacture a full range of awesome wake features. Making them from **HDPE** (high density polyethylene) means that they look great, are safer to ride and will last much longer. These are what make a park popular and booked all the time! We aim to please, so clients can order ready-made or custom-made features.

How do we make them? In the production process, all parts are cut out from HDPE sheets with CNC routers. UV-proof HDPE details are assembled and welded together with a UV-proof welding rod. Obstacles are filled with styrofoam to ensure floatage, keep them in good shape and quiet during riding. What distinguishes us most from other producers is that we are using a **unique hot bending** technology so that edges are rounded, strong and safe to ride.



Wakepark Palanga, Lithuania
photographer Rūstusis Brokolis



Ride-on handrail



Roof top



Kicker 130



Amiens custom feature



Wakepark Banská Bystrica, Slovakia

We provide the best, personalized service for our customers. From consultation and business planning to installation, training and maintenance, we're with you every step of the way. We pledge to keep all systems, spare parts and optional equipment in stock at all times to ensure quick delivery and installation. You won't get that from anyone else!

OUR SERVICES

- Consultations
- Analysis
- Business Planning
- Development
- Execution
- Training



"WakeStation cables and park features are the best in the business. Assembled to the highest standards with high grade and durable parts, we think WakeStation products are **the most reliable on the market**. The triangular truss towers are strong and easy to climb, making all checks incredibly straightforward. Simple but intelligent software and very impressive automatics mean day-to-day use of the WakeStation system is as easy as possible."

– Toby Oliver, **Club Wake Park**, UK

"WakeStation has proven to be a very high quality product over the past five years. WakeStation is both more robust than other similar products and has a wide range of accessories. WakeStation obstacles are **strikingly cool to watch**, as well as an incredibly good ride! Delivery of spare parts and liaison with the manufacturer always work flawlessly without looking at the clock, which increases the product's value."

– Timo Piippo, **FlowFun OY**, Finland



"Not only is WakeStation the most advanced two-tower cable system on the market, but they are constantly upgrading their technology in new and innovative ways. Add **outstanding maintenance and customer service** to that, and you just can't go wrong. It's a pure pleasure to work with the WakeStation crew."

– Ģirts Upenieks, **wakeyou**, Latvia

"We chose WakeStation because they have the most robust and trustworthy system on the market. Installation was fast and easy and we haven't had any problems with it at all. We also have the WakeStation obstacles which we are super satisfied with. They look nice, are **easy to assemble and feel safe to ride** on for beginners and advanced riders."

– Henning Jorlén, **Malmö Wake Park**, Sweden



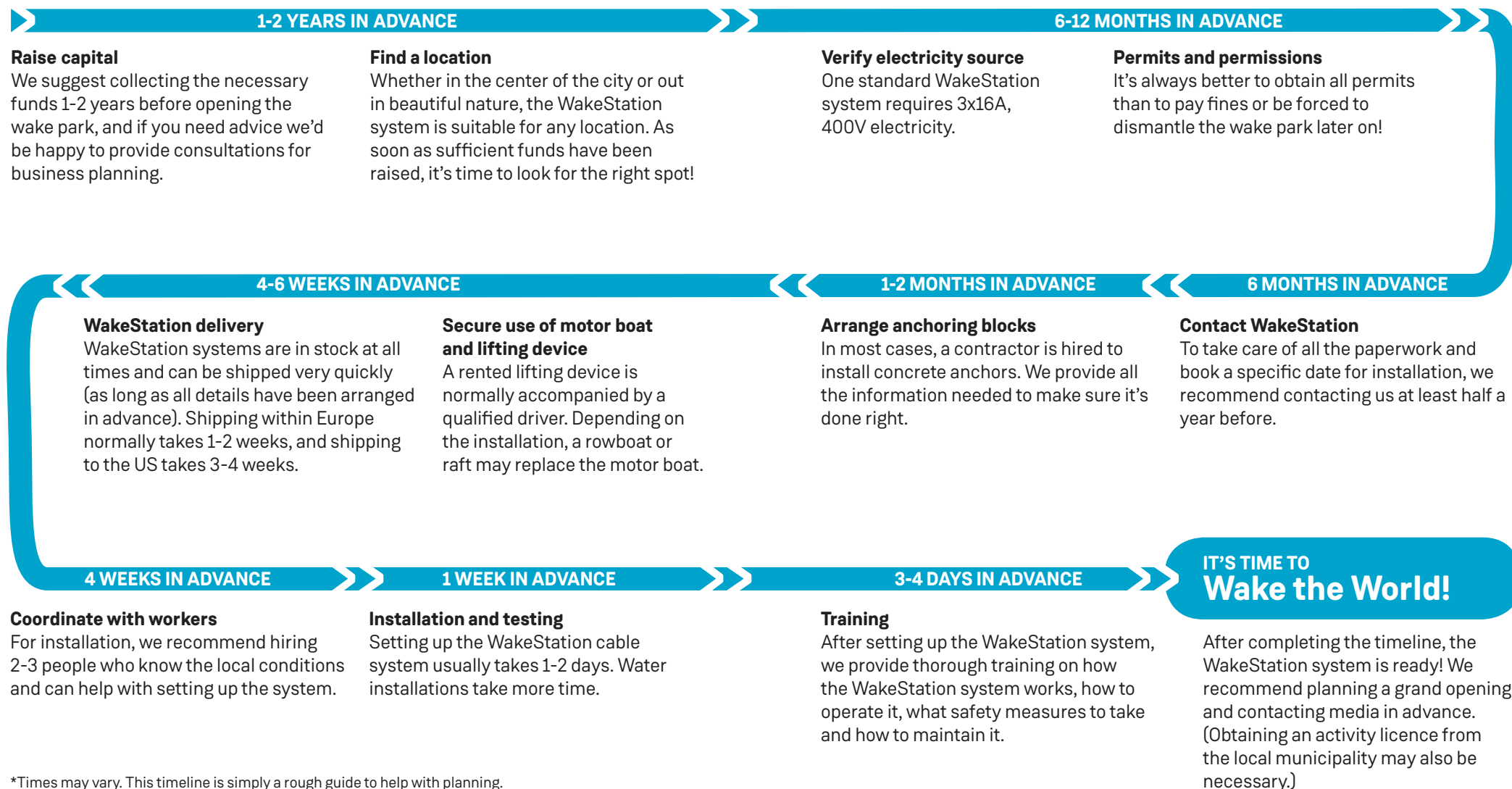
~Pricing~

The WakeStation system is competitively priced.
Each standard WakeStation set includes:

- Standard size (6.75 m) pylon with 5.5 kW motor
- Standard size (6.75 m) static pylon
- Static cables with fixings
- Automatic equipment box and controller (with frequency converter and pre-installed software)
- Ergonomic remote with 15 m wire
- Electrical wiring (20 m) for control board setup
- Computer software for adjusting automatic equipment
- Pre-installed router
- One complete carrier
- Running cable (according to track length)
- Easy-fix connectors for electrical wiring
- All manuals and documentation, including CE certificate

The costs of delivery, installation and staff training depend on site complexity.

Timeline



*Times may vary. This timeline is simply a rough guide to help with planning.

Parks and -DISTRIBUTORS-

Legend:

- WakeStation
- Pentasi FSC



HEAD OFFICE | Worldwide, Estonia

Snow & Wakeboard Solutions LLC
Pikk 94-33
50606 Tartu, Estonia
+372 51 65 819
info@wakestation.com
www.wakestation.com

Visit www.wakestation.com

for a full list of parks featuring
the WakeStation system

Follow us on:

f TheWakeStation
thewakestation

Finland

Flow Fun OY
Lundinkatu 16 A 41
06100 Porvoo, Finland
+358 449 518 015
info@flowfun.fi
www.flowfun.fi

UK, Ireland, Holland

Gordon Oliver Distribution Ltd.
13 Carter Avenue, Broughton
Northamptonshire, NN14 1LY, UK
+44 747 518 3383
sales@gordonoliverdistribution.com
www.gordonoliverdistribution.com

North America

The Grounds Guys
1-22 Coles Crescent
Mono, ON, L9W 5W2, Canada
+1 800 361 5296
paul@groundsguys.ca
www.groundsguys.ca

Hungary and the Balkans

Pentasi Kft.
Kiskunmajsa
Csendes köz 1, 6120 Hungary
+36 30 552 8657
info@pentasi.eu
www.pentasi.eu

Sweden

Malmö Wake Park
Västra Varvsgatan 8
211 12 Malmö, Sweden
+46 704 125431
info@malmowakepark.se
www.malmowakepark.se

Denmark

Herning Vandski & Wakeboard Klub
Haugevej 1B
7400 Herning, Denmark
+45 201 68650
l.bloksgaard@gmail.com
www.herningvandski.dk

Portugal

Wakeboard Portugal
Rua do Lago Azul n541
Castanheira 2240-332 Ferreira do Zezere
+351 915 844 443
wakestation@wakeboardportugal.com
www.wakeboardportugal.com

France

WakeStation France
158 Rue des Causses
34280 Mauguio, France
+33 628 455 034
contact@wakestation-france.fr
www.wakestation-france.fr